



Sixth Form Colleges  
Association

THE VOICE OF SIXTH FORM EDUCATION

# SIXTH FORM COLLEGES: 2019 KEY FACTS AND FIGURES



The Sixth Form Colleges Association is the established voice of dedicated sixth form education and the hub of a national network of sixth form providers. SFCA represents all designated sixth form colleges and 16-19 academies in England, as well as a growing number of Further Education colleges and 16-19 free schools. A complete list of our members can be found on the map overleaf. This document provides information on our sixth form college and 16-19 academy members and their students.

## 16-19 students<sup>1</sup>

| Institution                             | Number of institutions | Total number of 16-19 students |
|---|------------------------|--------------------------------|
| Sixth form colleges and 16-19 academies | 84                     | 158,456                        |
| Academy sixth forms                     | 1,447                  | 302,559                        |
| School sixth forms                      | 445                    | 88,813                         |

### Average number of 16-19 students

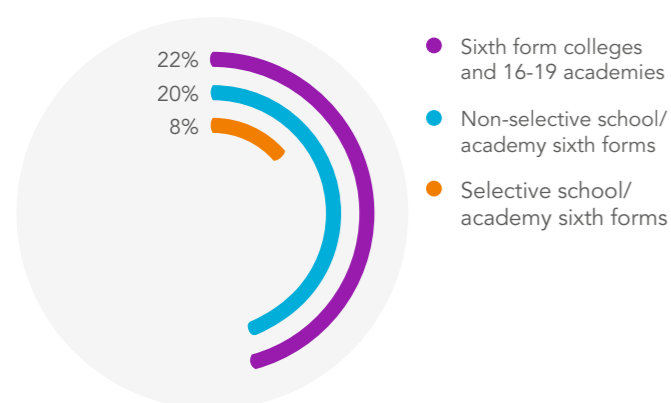
- Sixth form colleges and 16-19 academies
- Academy sixth forms
- School sixth forms



### Sixth form colleges and 16-19 academies by size

| Number of 16-19 students | Number of institutions |
|--------------------------|------------------------|
| 2500+                    | 11                     |
| 2000-2499                | 21                     |
| 1500-1999                | 24                     |
| 1000-1499                | 23                     |
| 500-999                  | 5                      |

### % of students who are disadvantaged<sup>2,3</sup>



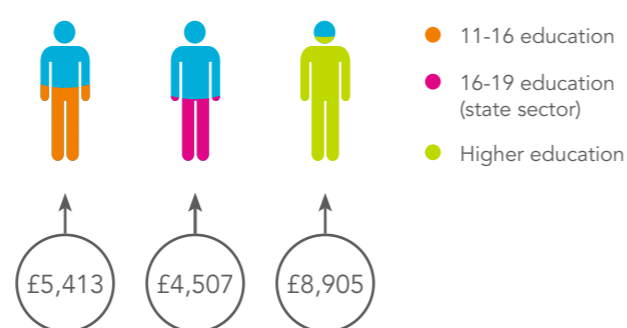
## 16-19 funding

Sixth form education is funded at a lower rate than both pre-16 and higher education.

The average funding of £4,507 per student received by sixth form colleges/16-19 academies and school/academy sixth forms is 17% less than the funding received to educate younger students in secondary schools, and 49% less than the average university tuition fee of £8,905.<sup>4,5</sup>

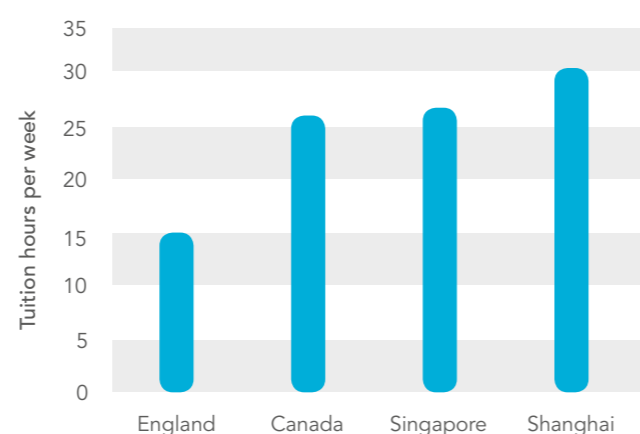
The underfunding of 16-19 education is felt particularly acutely by sixth form colleges as, unlike schools and academies, they cannot cross subsidise from the higher funding available for younger students and do not have their VAT costs reimbursed. This is a tax on learning that requires the average sixth form college to redirect around 4% of its annual funding away from the front line education of students to pay VAT.

### Annual education funding per student



### 16-19 weekly tuition hours: international comparisons

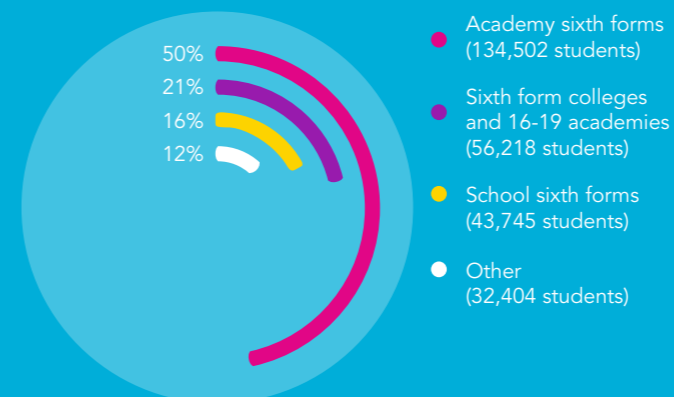
Sixth formers in England are now only funded to receive around half of the tuition time as sixth formers in other leading economies.<sup>6</sup>



## 16-19 performance

Sixth form colleges and 16-19 academies are responsible for over one-fifth (21%) of the A levels delivered in the state sector England each year and help their students to achieve better exam results than all other non-selective providers.<sup>7</sup>

### A level delivery in England



### Average A-level point score per entry

- Academy sixth forms
- Sixth form colleges and 16-19 academies
- School sixth forms



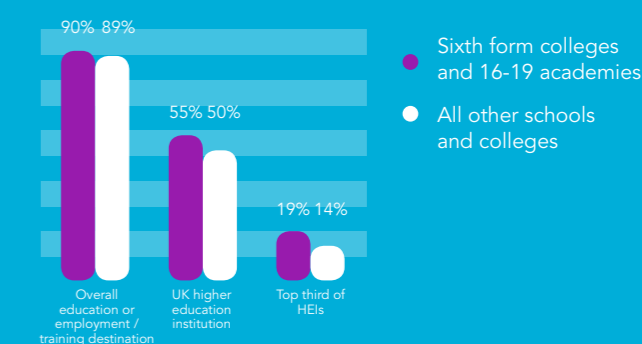
### Progress in English and maths<sup>8</sup>

The English and maths progress measure looks at attainment in these subjects at the end of 16-19 study, compared to attainment at the end of key stage 4, for students who did not achieve a GCSE grade 4-9.

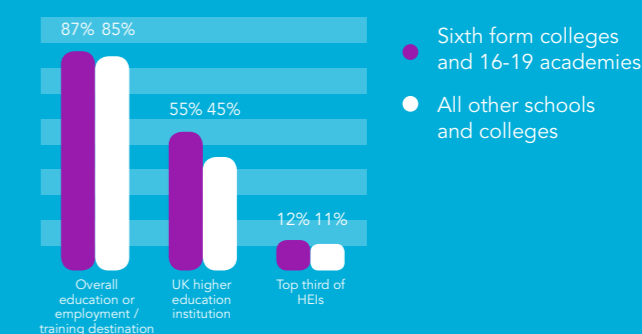
| Institution         | English | Maths |
|---------------------|---------|-------|
| Sixth form colleges | 0.44    | 0.40  |
| Academy sixth forms | 0.44    | 0.30  |

## Progression to Higher Education

### Progression rate of all students<sup>9</sup>



### Progression rate of disadvantaged students



### Progression and continuation of sixth form college students within Higher Education<sup>10</sup>

#### % continuing to study for a second year

| Institution                                   | All universities | Russell Group universities |
|---|------------------|----------------------------|
| Sixth form college and 16-19 academy students | 89%              | 93%                        |
| State school or college students              | 88%              | 93%                        |

#### % obtaining a first class or upper second class honours degree

| Institution                                   | All universities | Russell Group universities |
|---|------------------|----------------------------|
| Sixth form college and 16-19 academy students | 80%              | 89%                        |
| State school or college students              | 78%              | 88%                        |

# Our members

Roman Catholic Sixth Form Colleges are indicated by a •

## North-West Region

- 1 Aquinas College •
- 2 Ashton Sixth Form College
- 3 Birkenhead Sixth Form College
- 4 Bolton Sixth Form College
- 5 Cardinal Newman College •
- 6 Carmel College •
- 7 Connell Sixth Form College
- 8 Holy Cross College •
- 9 Hugh Baird College (South Sefton Campus)
- 10 Loreto College •
- 11 Nelson & Colne College
- 12 Oldham Sixth Form College
- 13 Priestley College
- 14 Rochdale Sixth Form College
- 15 Runshaw College
- 16 Saint John Rigby College •
- 17 Saint Mary's College, Blackburn •
- 18 Salford City College
- 19 Sir John Deane's College
- 20 The Cheadle and Marple Network
- 21 The Blackpool Sixth Form College
- 22 Winstanley College
- 23 Xaverian College •
- 24 Barnsley Sixth Form College

## North-East Region

- 25 Dixons Sixth Form Academy
- 26 Durham Sixth Form Centre
- 27 Elliot Hudson College
- 28 Franklin College
- 29 Greenhead College
- 30 Huddersfield New College
- 31 John Leggott Sixth Form College
- 32 Longley Park Sixth Form College
- 33 New College, Bradford
- 34 New College, Pontefract
- 35 New College, Doncaster
- 36 Newcastle Sixth Form College
- 37 Notre Dame Catholic Sixth Form College •
- 38 Prior Pursglove College and Stockton Sixth Form College
- 39 Queen Elizabeth Sixth Form College
- 40 Scarborough Sixth Form College
- 41 SRC Bede Sixth Form
- 42 Thomas Rotherham College
- 43 Wilberforce Sixth Form College
- 44 Wyke Sixth Form College

## Midlands Region

- 45 Bilborough Sixth Form College
- 46 Cadbury Sixth Form College
- 47 Cirencester College
- 48 City of Stoke-on-Trent Sixth Form College
- 49 Gateway Sixth Form College
- 50 Hereford Sixth Form College
- 51 Joseph Chamberlain Sixth Form College
- 52 King Edward VI College Nuneaton
- 53 King Edward VI College Stourbridge
- 54 Newcastle & Stafford Colleges Group
- 55 Shrewsbury Colleges Group
- 56 The Sixth Form College Solihull
- 57 Worcester Sixth Form College
- 58 Wyggeston and Queen Elizabeth I College

## East Region

- 59 Abbeygate Sixth Form College
- 60 East Norfolk Sixth Form College
- 61 Hills Road Sixth Form College
- 62 Long Road Sixth Form College
- 63 Lowestoft Sixth Form College
- 64 Luton Sixth Form College
- 65 One Sixth Form College
- 66 The Sixth Form College, Colchester
- 67 USP College

## London Region

- 68 Christ the King Sixth Form College •
- 69 City And Islington Sixth Form College
- 70 Coulsdon Sixth Form College
- 71 Haringey Sixth Form College
- 72 Havering Sixth Form College
- 73 John Ruskin College
- 74 Leyton Sixth Form College
- 75 Newham Sixth Form College
- 76 Saint Charles Catholic Sixth Form College •
- 77 Saint Dominic's Sixth Form College •
- 78 Saint Francis Xavier Sixth Form College •
- 79 Shooters Hill Sixth Form Centre
- 80 Sir George Monoux College
- 81 BSix
- 82 Woodhouse College

## South-East Region

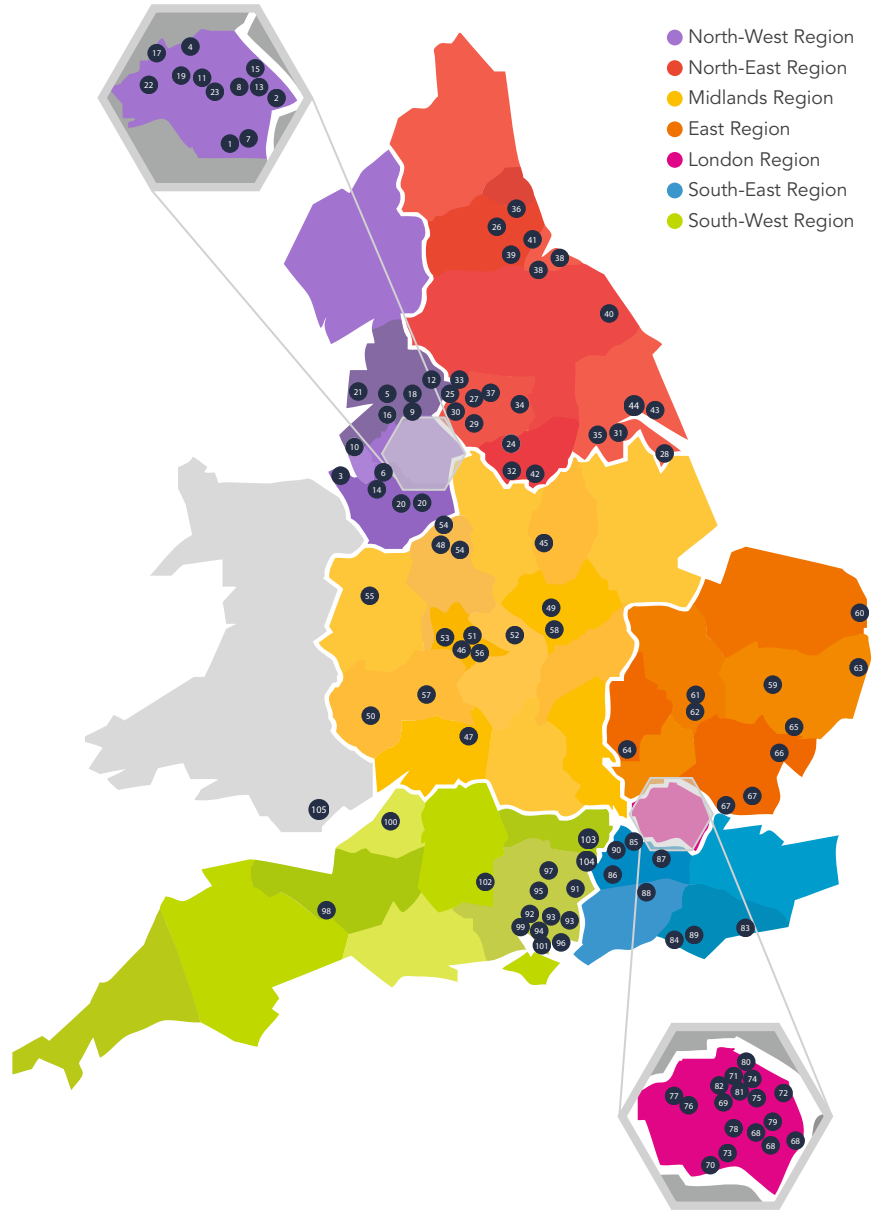
- 83 Bexhill College
- 84 Brighton Hove and Sussex Sixth Form College
- 85 Esher College
- 86 Godalming College
- 87 Reigate College
- 88 The College of Richard Collyer
- 89 Varndean College
- 90 Woking College

## South-West Region

- 91 Alton College
- 92 Barton Peveril Sixth Form College
- 93 Havant & South Downs College
- 94 Itchen Sixth Form College
- 95 Peter Symonds College
- 96 Queen Mary's College
- 97 Richard Huish College
- 98 Richard Taunton Sixth Form College
- 99 Saint Brendan's Sixth Form College •
- 100 Saint Vincent College
- 101 Salisbury Sixth Form College
- 102 The Henley College
- 103 The Sixth Form College Farnborough

## Wales

- 105 Saint David's Catholic College •



## Data Sources

- 1 SFCA analysis of Education and Skills Funding Agency data, 16-19 allocation data, 2018 to 2019 academic year: [www.gov.uk/government/publications/16-to-19-allocation-data-2018-to-2019-academic-year](http://www.gov.uk/government/publications/16-to-19-allocation-data-2018-to-2019-academic-year)
- 2 SFCA analysis of DfE performance tables, 2017 to 2018. [www.compare-school-performance.service.gov.uk/download-data?currentstep=year&regiontype=beforeStep&la=&downloadYear=2017-2018](http://www.compare-school-performance.service.gov.uk/download-data?currentstep=year&regiontype=beforeStep&la=&downloadYear=2017-2018)
- 3 This measure looks at students' status in their final year of 16-18 study. Disadvantaged pupils are defined as those who were eligible for free school meals at any point in the previous six years or have been looked after by their local authority. These are students who would have attracted the Pupil Premium in their last year of KS4.
- 4 DfE schools block allocations indicate that grant funding per student in secondary schools is £5413, this compares to an average of £4507 per student across school/academy sixth forms and Sixth Form Colleges (based on SFCA analysis of ESFA 16-19 allocation data, 2018 to 2019 academic year).
- 5 House of Commons Library- Higher education tuition fees in England: <http://researchbriefings.files.parliament.uk/documents/CBP-8151/CBP-8151.pdf>
- 6 UCL Institute of Education, Tuition time in upper secondary education (16-19): Comparing six national education systems, updated October 2016: <https://sfcawebsite.s3.amazonaws.com/uploads/document/Tuition-time-in-upper-secondary-education-2016.pdf?1545389697>
- 7 Numbers of A-level students found in the mainstream state sector at the end of 16-18 study found in DfE performance tables, 2017 to 2018: [www.compare-school-performance.service.gov.uk/download-data?currentstep=year&regiontype=beforeStep&la=&downloadYear=2017-2018](http://www.compare-school-performance.service.gov.uk/download-data?currentstep=year&regiontype=beforeStep&la=&downloadYear=2017-2018). To make meaningful comparisons, grammar schools were excluded from the analysis because their students have much higher levels of prior attainment (GCSE results) than other providers, and much lower levels of Free School Meal eligibility.
- 8 Analysis of GCSE English and maths data from DfE A level and other 16-18 results publication: [https://assets.publishing.service.gov.uk/government/uploads/system/uploads/attachment\\_data/file/773054/2018\\_revised\\_A\\_level\\_and\\_other\\_16-18\\_results\\_in\\_England.pdf](https://assets.publishing.service.gov.uk/government/uploads/system/uploads/attachment_data/file/773054/2018_revised_A_level_and_other_16-18_results_in_England.pdf)
- 9 Department for Education, Destinations of key stage 4 and key stage 5 pupils: (2017) revised: [www.gov.uk/government/statistics/destinations-of-ks4-and-ks5-pupils-2017](http://www.gov.uk/government/statistics/destinations-of-ks4-and-ks5-pupils-2017)
- 10 SFCA analysis of data obtained from the Higher Education Statistics Agency.