



Sixth Form Colleges
Association

THE VOICE OF SIXTH FORM EDUCATION

SIXTH FORM COLLEGES: 2021 KEY FACTS AND FIGURES



sixthformcolleges.org

The Sixth Form Colleges Association is the established voice of dedicated sixth form education and the hub of a national network of sixth form providers. SFCA represents all designated sixth form colleges and 16-19 academies in England, as well as a growing number of Further Education colleges and 16-19 free schools. A complete list of our members can be found on the map overleaf. This document provides information on our sixth form college and 16-19 academy members and their students.

16-19 students¹

Institution	Number of institutions	Total number of 16-19 students
Sixth form colleges and 16-19 academies	79	156,138
Academy sixth forms	1,461	303,407
School sixth forms	383	77,927

Average number of 16-19 students

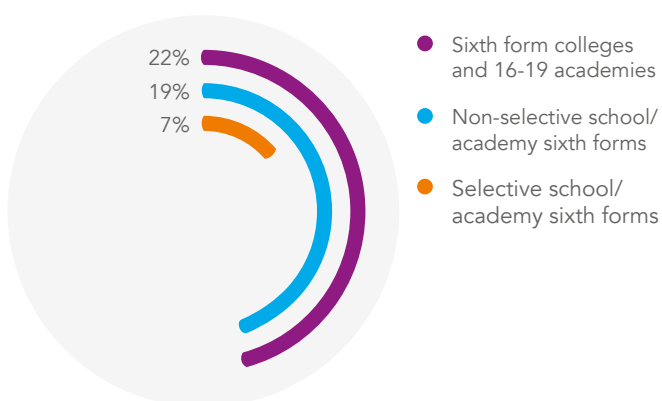
- Sixth form colleges and 16-19 academies
- Academy sixth forms
- School sixth forms



Sixth form colleges and 16-19 academies by size

Number of 16-19 students	Number of institutions
2500+	15
2000-2499	18
1500-1999	24
1000-1499	17
700-999	5

% of students who are disadvantaged^{2,3}



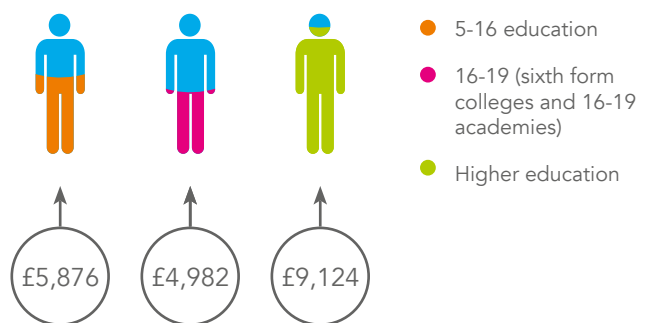
16-19 funding

Sixth form education is funded at a lower rate than both pre-16 and higher education.

The average funding of £4,982 per student received by sixth form colleges and 16-19 academies is 15% less than the funding received to educate younger students in primary and secondary schools, and 45% less than the average university tuition fee of £9,124.^{4,5}

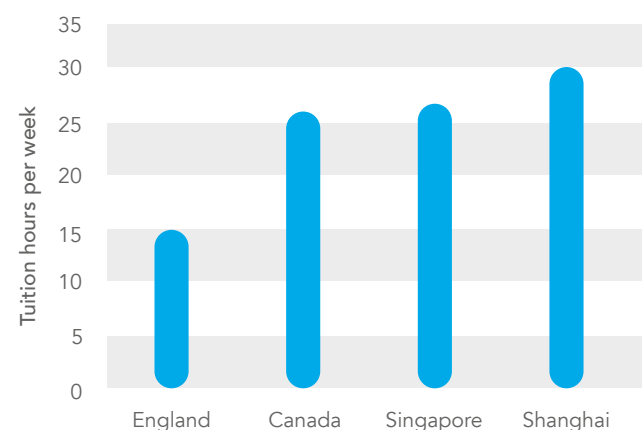
The underfunding of 16-19 education is felt particularly acutely by sixth form colleges as, unlike schools and academies, they cannot cross subsidise from the higher funding available for younger students and do not have their VAT costs reimbursed. This is a tax on learning that requires the average sixth form college to redirect around 4% of its annual funding away from the front line education of students to pay VAT.

Annual education funding per student



16-19 weekly tuition hours: international comparisons

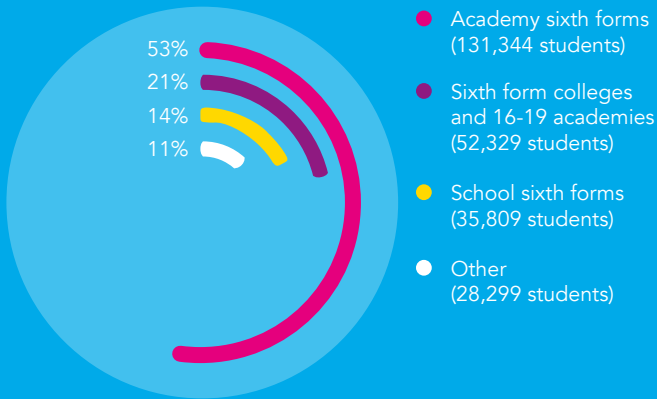
Sixth formers in England are now only funded to receive around half of the tuition time as sixth formers in other leading economies.⁶



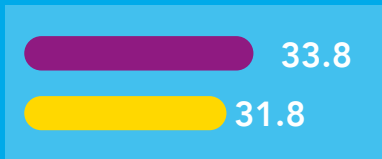
16-19 performance

Sixth form colleges and 16-19 academies are responsible for educating over a fifth (21%) of A-level students in the mainstream state sector in England each year and help their students to achieve better exam results than all other non-selective providers.⁷

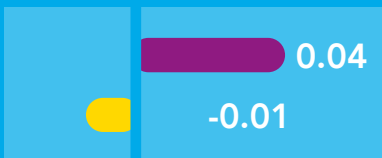
A-level delivery in England



Average A-level point score per entry



Average A-level value-added for all students



● Sixth form colleges and 16-19 academies ● Academy and school sixth forms

Progress in English and maths⁸

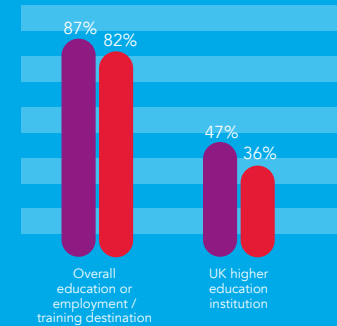
The English and maths progress measure looks at attainment in these subjects at the end of 16-19 study, compared to attainment at the end of key stage 4, for students who did not achieve a GCSE grade 4-9.

Institution	English	Maths
Sixth form colleges	0.46	0.41
Academy and school sixth forms	0.44	0.34

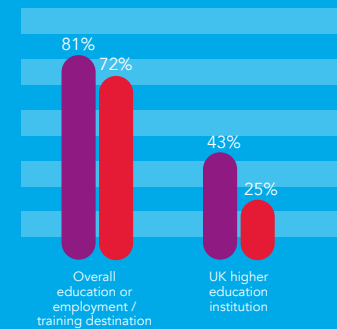
Higher Education

● Sixth form colleges and 16-19 academies ● All other schools and colleges

Progression rate⁹



Progression rate of disadvantaged students



Progression of students in higher education¹⁰

% continuing to study for a second year

Institution	All universities	Disadvantaged students
Sixth form college and 16-19 academy students	88.3%	86.2%
State school or college students	87.8%	85%

% obtaining a first class or upper second class honours degree

Institution	All universities	Disadvantaged students
Sixth form college and 16-19 academy students	85.2%	81.2%
State school or college students	84.2%	80.1%

Our members

Roman Catholic Sixth Form Colleges are indicated by a •

North-West Region

- 1 Aquinas College •
- 2 Ashton Sixth Form College
- 3 Birkenhead Sixth Form College
- 4 Bolton Sixth Form College
- 5 Cardinal Newman College •
- 6 Carmel College •
- 7 Connell Co-op College
- 8 The Cheadle and Marple Network
- 9 Holy Cross College •
- 10 Hugh Baird College (South Sefton Campus)
- 11 LIPA Sixth Form College
- 12 Loreto College •
- 13 Nelson and Colne College
- 14 Oldham Sixth Form College
- 15 Priestley College
- 16 Rochdale Sixth Form College
- 17 Runshaw College
- 18 St John Rigby College •
- 19 St Mary's College, Blackburn •
- 20 Salford City College
- 21 Sir John Deane's College
- 22 Southport College
- 23 The Blackpool Sixth Form College
- 24 Winstanley College
- 25 Xaverian College •

North-East Region

- 26 Barnsley College
- 27 CAPA College
- 28 Dixons Sixth Form Academy
- 29 Durham Sixth Form Centre
- 30 Elliot Hudson College
- 31 Franklin College
- 32 Greenhead College
- 33 Huddersfield New College
- 34 John Leggott Sixth Form College
- 35 Longley Park Sixth Form College
- 36 New College Bradford
- 37 New College Doncaster
- 38 New College Pontefract
- 39 Newcastle Sixth Form College
- 40 Notre Dame Catholic Sixth Form College •
- 41 Queen Elizabeth Sixth Form College
- 42 Scarborough Sixth Form College
- 43 Bede Sixth Form College
- 44 Prior Pursglove and Stockton Sixth Form College
- 45 Thomas Rotherham College
- 46 Trinity Sixth Form Academy
- 47 Wilberforce Sixth Form College
- 48 Wyke Sixth Form College

Midlands Region

- 49 Bilborough Sixth Form College
- 50 BOA Stage and Screen
- 51 Cadbury Sixth Form College
- 52 Cirencester College
- 53 City of Stoke-on-Trent Sixth Form College
- 54 Gateway Sixth Form College
- 55 Hereford Sixth Form College
- 56 Joseph Chamberlain Sixth Form College
- 57 King Edward VI College Nuneaton
- 58 King Edward VI College, Stourbridge
- 59 Newcastle and Stafford Colleges Group
- 60 Sandwell College
- 61 Shrewsbury Colleges Group
- 62 Solihull Sixth Form College
- 63 Worcester Sixth Form College
- 64 Wyggeston and Queen Elizabeth I College

East Region

- 65 Abbeigate Sixth Form College
- 66 East Norfolk Sixth Form College
- 67 Hills Road Sixth Form College
- 68 Long Road Sixth Form College
- 69 Luton Sixth Form College
- 70 One Sixth Form College
- 71 The Sixth Form College, Colchester
- 72 USP College
- 73 West Suffolk College

London Region

- 74 Big Creative Education
- 75 BSix Sixth Form College
- 76 Christ the King Sixth Form College •
- 77 City and Islington College
- 78 Coulsdon Sixth Form College
- 79 East London Arts and Music
- 80 Haringey Sixth Form College
- 81 Havering Colleges Sixth Form
- 82 Leyton Sixth Form College
- 83 London Screen Academy
- 84 Newham Sixth Form College
- 85 St Charles Catholic Sixth Form College •
- 86 St Dominic's Sixth Form College •
- 87 St Francis Xavier Sixth Form College •
- 88 Shooters Hill Sixth Form College
- 89 Sir George Monoux College
- 90 William Morris Sixth Form
- 91 Woodhouse College

South-East Region

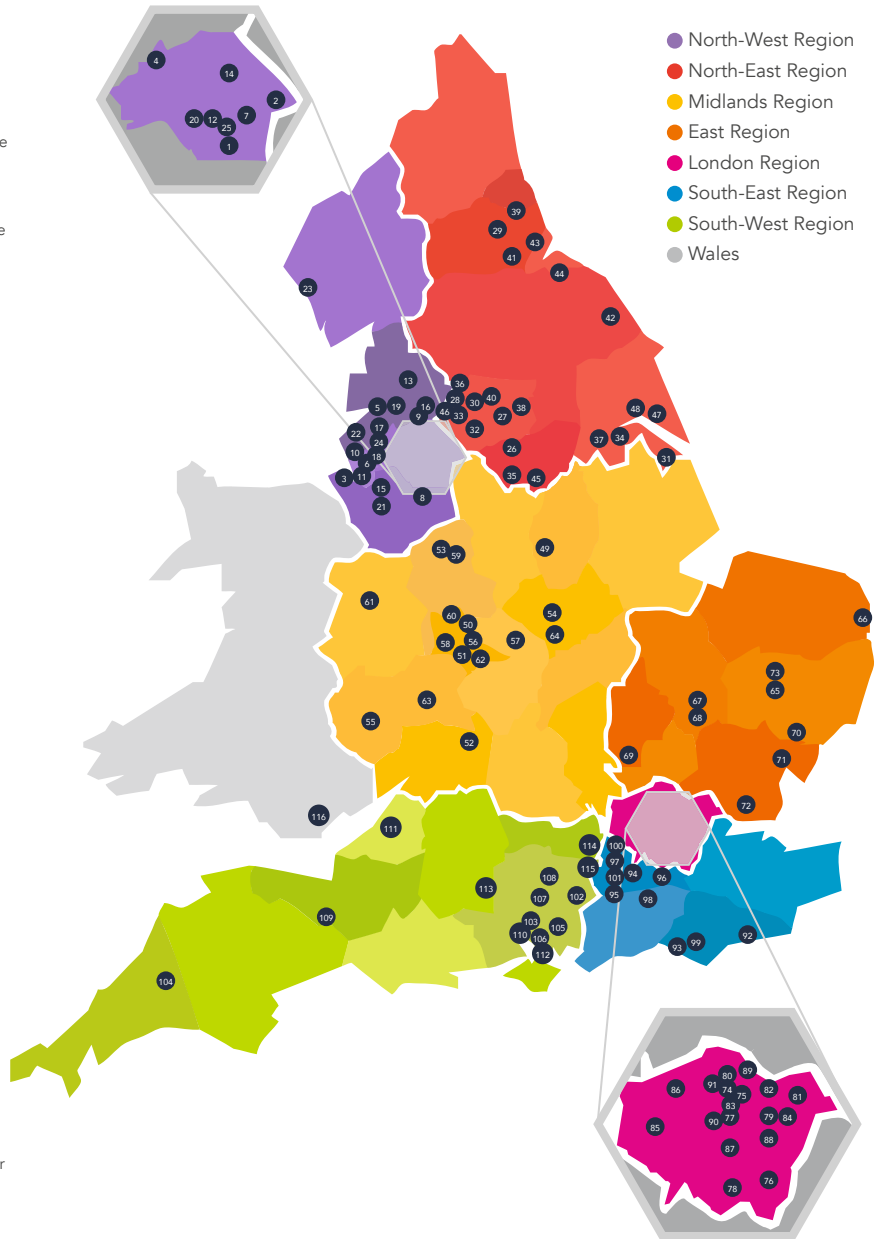
- 92 Bexhill Sixth Form College
- 93 Brighton Hove and Sussex Sixth Form College
- 94 Esher Sixth Form College
- 95 Godalming College
- 96 Reigate Sixth Form College
- 97 Strode's College
- 98 The College of Richard Collyer
- 99 Varndean College
- 100 Windsor College
- 101 Woking College

South-West Region

- 102 Alton College
- 103 Barton Peveril Sixth Form College
- 104 Callywith College
- 105 Havant and South Downs College
- 106 Itchen Sixth Form College
- 107 Peter Symonds College
- 108 Queen Mary's College
- 109 Richard Huish College
- 110 Richard Taunton Sixth Form College
- 111 St Brendan's Sixth Form College •
- 112 St Vincent College
- 113 Salisbury Sixth Form College
- 114 The Henley College
- 115 The Sixth Form College Farnborough

Wales

- 116 St David's Catholic Sixth Form College •



Data Sources

- 1 Education Funding Agency, 16-19 allocation data, 2020 to 2021 academic year: <https://www.gov.uk/government/publications/16-to-19-allocation-data-2020-to-2021-academic-year>
- 2 SFCA analysis of DfE performance tables, 2018 to 2019. <https://www.compare-school-performance.service.gov.uk/download-data?currentstep=year®iontype=beforeStep&la=&downloadYear=2018-2019>
- 3 This measure looks at students' status in their final year of 16-18 study. Disadvantaged pupils are defined as those who were eligible for free school meals at any point in the previous six years or have been looked after by their local authority. These are students who would have attracted the Pupil Premium in their last year of KS4.
- 4 DfE schools block allocations indicate that grant funding per student in secondary schools is £5876, compared to an average of £4982 per student across Sixth Form Colleges and 16-19 academies (based on SFCA analysis of ESFA 16-19 allocation data, 2020 to 2021 academic year)
- 5 House of Commons Library- Cost of university courses in England: <https://researchbriefings.parliament.uk/ResearchBriefing/Summary/CBP-8386#fullreport>
- 6 UCL Institute of Education, Tuition time in upper secondary education (16-19): Comparing six national education systems, updated October 2016: <https://sfcawebsite.s3.amazonaws.com/uploads/document/Tuition-time-in-upper-secondary-education-2016.pdf?t=1545389697>
- 7 Numbers of A-level students found in the mainstream state sector at the end of 16-18 study found in DfE performance tables, 2018 to 2019: <https://www.compare-school-performance.service.gov.uk/download-data?currentstep=year®iontype=beforeStep&la=&downloadYear=2018-2019>. To make meaningful comparisons, grammar schools were excluded from the analysis because their students have much higher levels of prior attainment (GCSE results) than other providers, and much lower levels of Free School Meal eligibility
- 8 Analysis of GCSE English and maths data from DfE performance tables, 2018 to 2019: <https://www.compare-school-performance.service.gov.uk/download-data?currentstep=year®iontype=beforeStep&la=&downloadYear=2018-2019>.
- 9 Analysis of latest (2017/18) cohort destinations from DfE performance tables: <https://explore-education-statistics.service.gov.uk/find-statistics/16-18-destination-measures>
- 10 SFCA analysis of data obtained from the Higher Education Statistics Agency